



**2kiddy**

**WENZHOU XINGJIAN PLAY  
TOYS CO., LTD.**

Email address: [Info@2kiddy.com](mailto:Info@2kiddy.com) Cell Phone: 86-18958815569  
Wechat: 447666397 WhatsApp: +8613968951980  
Website: [www.2kiddy.com](http://www.2kiddy.com) [www.2kiddyplay.com](http://www.2kiddyplay.com)

**2023**  
YEAR  
PRODUCT CATALOG



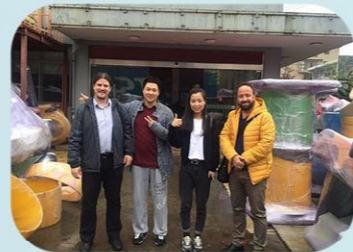
**2kiddy**  
PLAY TOYS

# ABOUT US

Wenzhou Xingjian Play Toys Co.,Ltd. is one-stop service of design -sale -shipping-installation-training guidance. our main products are indoor playground, trampoline park ,outdoor playground ,fitness equipment,etc.

The Company Adheres to the spirit of sincerity, enthusiasm, professionalism and 24-hour online service to provide customers with high-quality products. Now our production range are cover 10 series, Thousands attractive design drawings.

In recent years, we make the research and invention bravely and improve the production technology. The product has input beauty and function designing with the best characteristic of the combination of foreign and domestic style, Friendly and safe playground. All product has meet the safety standards for playground of CE, ISO TUV ,ASTM etc. Which makes Wenzhou Xingjian Play Toys Co.,Ltd earned the confidence of customer nationwide in playground industry.



# OUR TEAM

Our team are with sales department with 10 more years experience in this industry, professional and creative design department, engineer department which are enthusiastic and willing to embrace the new item and new technique. we hope to make play area which kids can have happiness, share and learn together. We hope to create a spot that the player will bring their own kids when their grow up.



The workshop with over 50 staffs, in 4 different regions (for plastic,metal,software,packing etc.)

We are committed to research and develop,produce and sell children playground to all over the words,in order to provide our partners with professional and efficient one-stop service.

# WORKSHOP



### WHEN WILL I GET MY ORDER?

It is depend on where is your location and which items your order. Usually our product leading time for indoor playground and trampoline is 14-25days, Shipping will take around 25 days to west coast of US, 35 days to east coast of US, 30 days to Europe, 35 days to South America and 15 days to the Middle East. Plus time for apply and clean custom. You can expect have your order totally in 50-70 days.

### HOW CAN I PAY?

The international freight changes each week, Each port have very different shipping freight. So we do not accept order directly online. We have to check freight first then make contract. You may use wire transfer (bank to bank). Alternative options of payment please call us.

### HOW DO I PICK UP MY ORDER?

Cooperation with 2KIDDY, You do not need to worry about pick up. Anywhere in the world we able to make shipping. We export world-wide more than decade. Have good relationship with shipping forwarder. Can clean custom and delivery directly to your location. Help you apply ISF and clean custom.

### ABOUT THEME AND COLORS

So far we already have 14 different themes for playground, each theme have them own color, which have been test and comparison by our designer many times. If you not chose equipment by theme any colors are fine with us. Just mentioned what you needs. Our designer will take care rest and make sure everything in order.

### WHEN WILL I GET QUOTATION?

Even we already marked most items with price online, but a formal price list will still help you do selection and compare. A formal quote will be sent within 24 hours on most days excluding holidays and weekends. Your quote request will be reviewed by a customer service representative, Leave us messages for more!

### DO YOU HAVE ANY DEALER?

Often the answer is yes. Dealer do their own marketing, sale and maintain. Playground equipment is cheap itself but take so much space and so many design. So no dealer able to keep playgrounds in storage. Playground equipment is not standard product. That is why clients are prefer to take from manufacturer directly.





# INDOOR PLAYGROUND

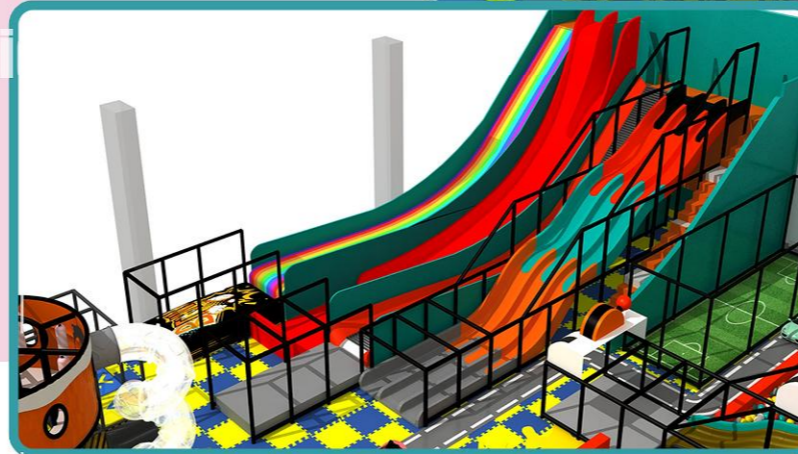
# INDOOR PLAYGROUND



## ROBOT THEME 2000SQM 21520SQFT

This comprehensive park consist of variety of cool and interesting projects like donut slide, devil slide, dodge ball, spider wall, and 4 level soft play area.

Suitable for children from 2-12 years old, both can exercise children's athletic ability can also develop social skills force.

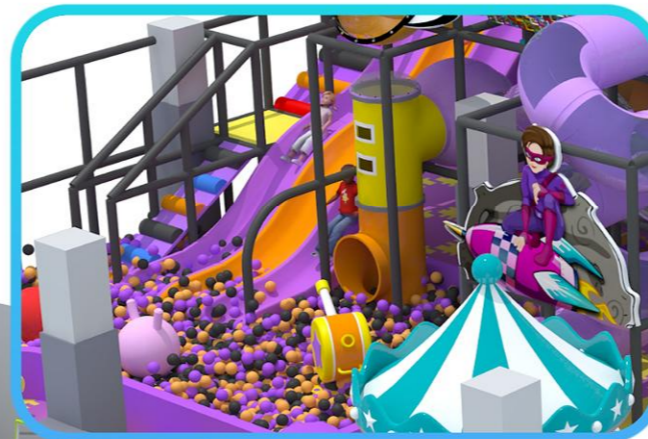


# INDOOR PLAYGROUND

**CITY TOWN THEME**  
**450SQM 4840SQFT**

This colorful design has 450sqm, we call it city town theme, with 3 levels, including big Donut slide and fiberglass slide, each parts connect with different bridge. There is a painting floor mat on EVA mats, which makes the whole area seem in a city town, it can also customized traffic lights, signs etc to make the playground vibrant. Kids drive the car pass through the playground with joyable mood, here they can experience the fun of cooperation, and have a nice leisure time.



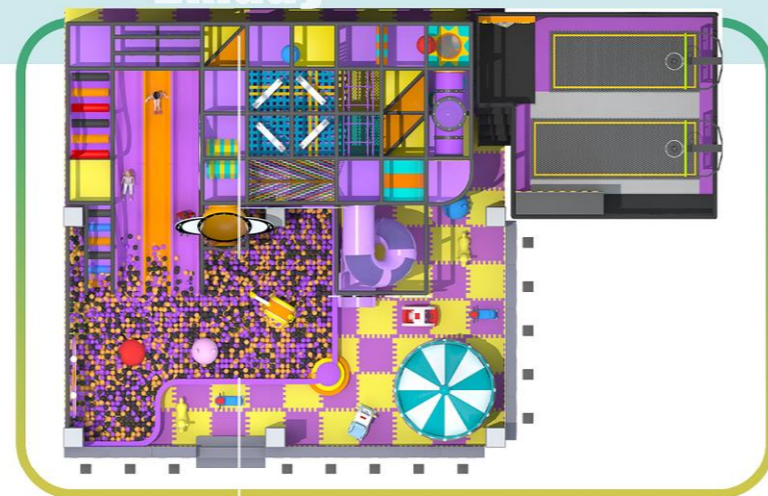


# INDOOR PLAYGROUND



## ROBOT PLANET THEME 200SQM 2152SQFT

In that remote place, there is a planet called Robot Planet. Robots are very powerful, they can travel at the speed of light, they can fly, dive, drill. This place let kids to explore, expand imagination and also experience. This customized indoor playground has 3 levels and is with many interesting activities such as big wave slide, trampoline, rainbow netting, spiral slide, crawling tunnels and other obstacles.



# INDOOR PLAYGROUND

## CASTLE THEME SIZE: 16\*7\*3M(52\*23\*9.8FT)

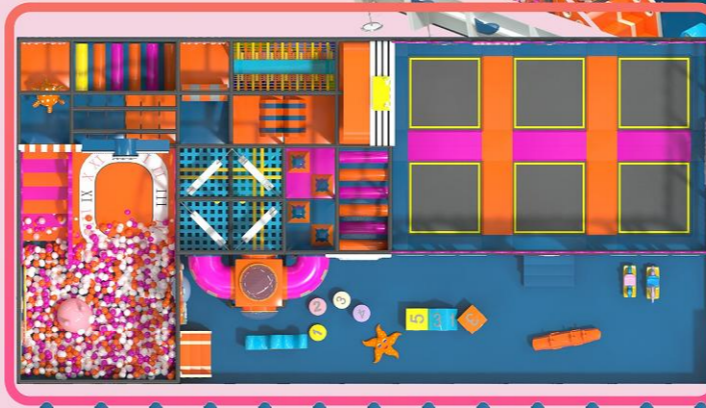
The abundant design we call it castle theme, Such rich colors are very popular not only in European countries, but also in Asian countries. This playground includes big soft slide with colorful ball pit, combine with the trampoline area, soft play area. It is really attractive for kids and a nice design for 112SQM area. The height for trampoline should be at least 3.5M, which is for safety consider. But all the color could be choose according to your requirement .



## CASTLE THEME SIZE: 16\*7\*3M(52\*23\*9.8FT)

This playground has two levels, each level height is not the regular height, it is staggered high and low which will make the whole space more plentiful and flexible.

This theme use the high saturation colors which make you deep impression and attract your eyes. Every item are not the regular items, using more soft play item instead the plastic items.



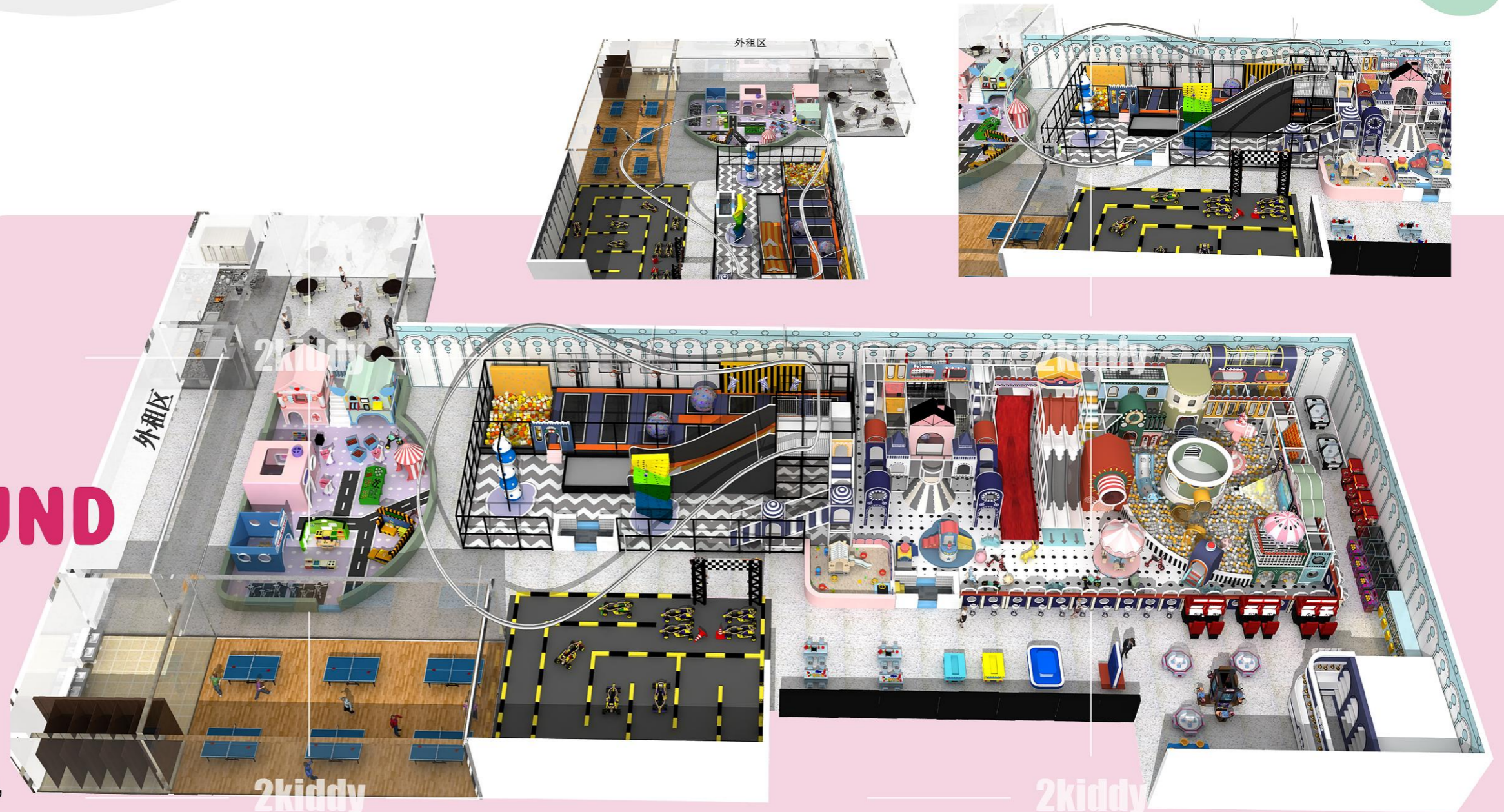


# INDOOR PLAYGROUND

**1500SQM**  
**16150SQFT**

This customizable indoor playground center has 3 levels and offers a separate role-playing area, which is very popular with children.

Some other projects like zip lines, trampolines, sand pit, slides, ball games, and climbing wall etc. that will keep children having fun for hours.





# INDOOR PLAYGROUND

**1000SQM**  
**10760SQFT**

This playground project is about 1500square meter, is a comprehensive play center include the soft playground, toddler area, sand pit, DIY room, reading room, video game and electrical play. Different age kids come all will find the items they like.





# INDOOR PLAYGROUND

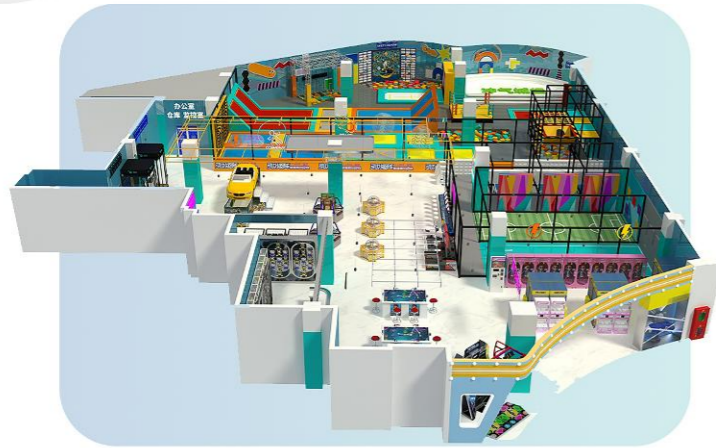
**1400SQM  
15069SQFT**

It is a kind of comprehensive playground with trampoline soft play area, sand pit, EPP block area etc. It can also be customized to fit the site plan of customers' position.

2kiddy

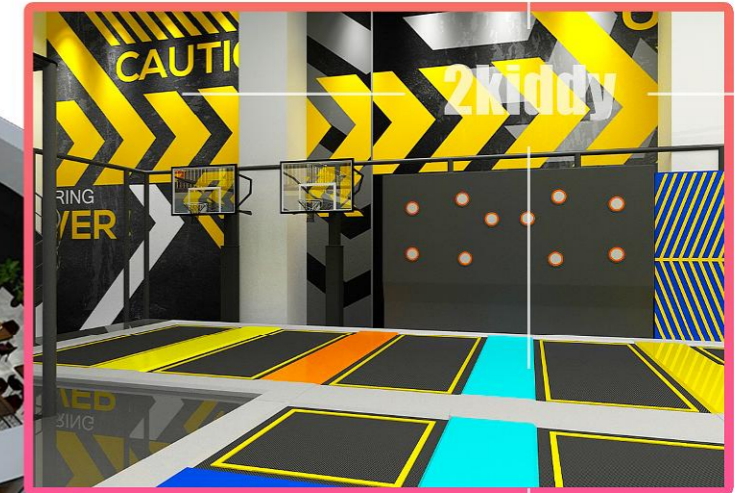
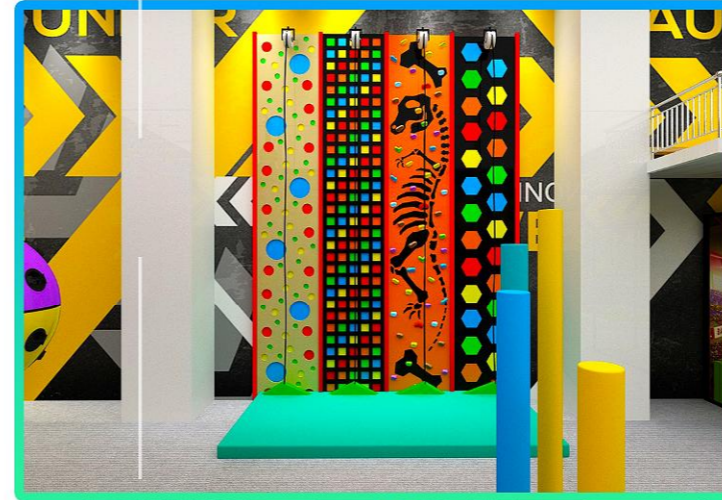


# INDOOR PLAYGROUND





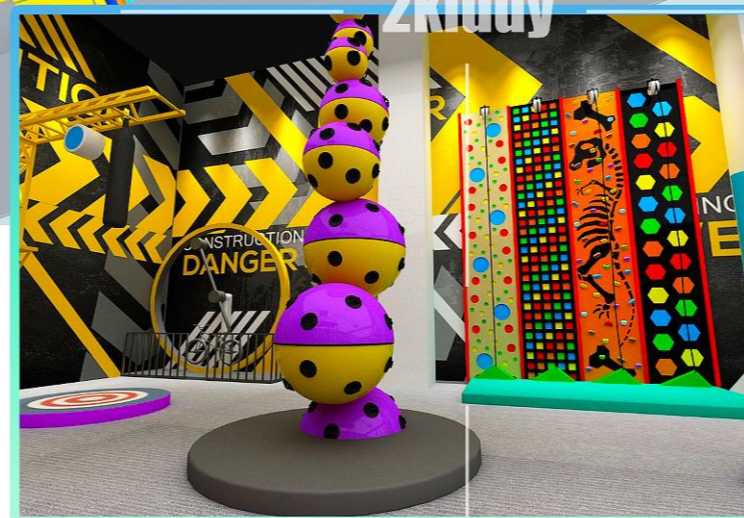
# TRAMPOLINE PARK



# TRAMPOLINE PARK

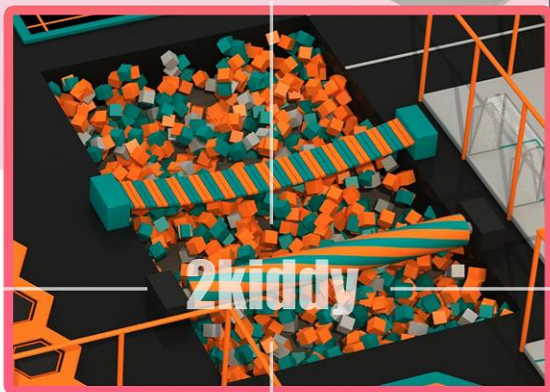
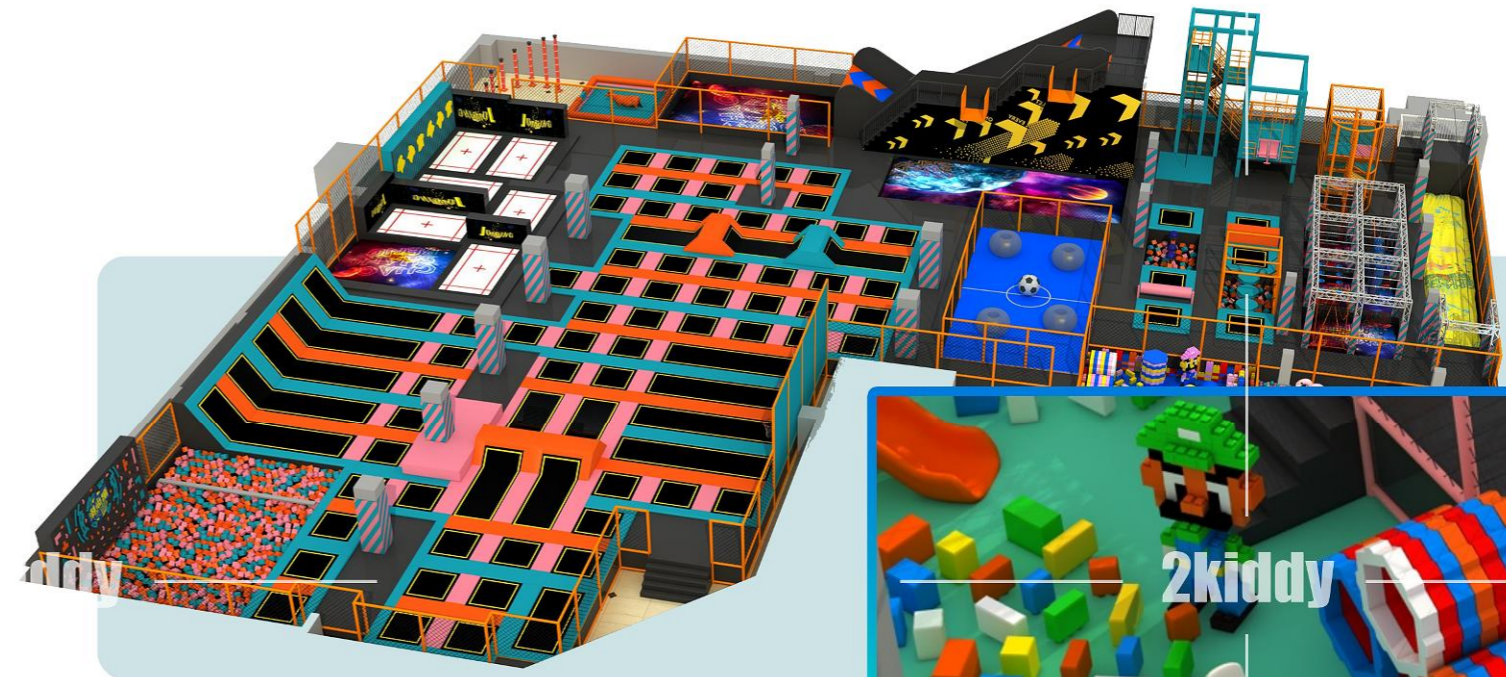
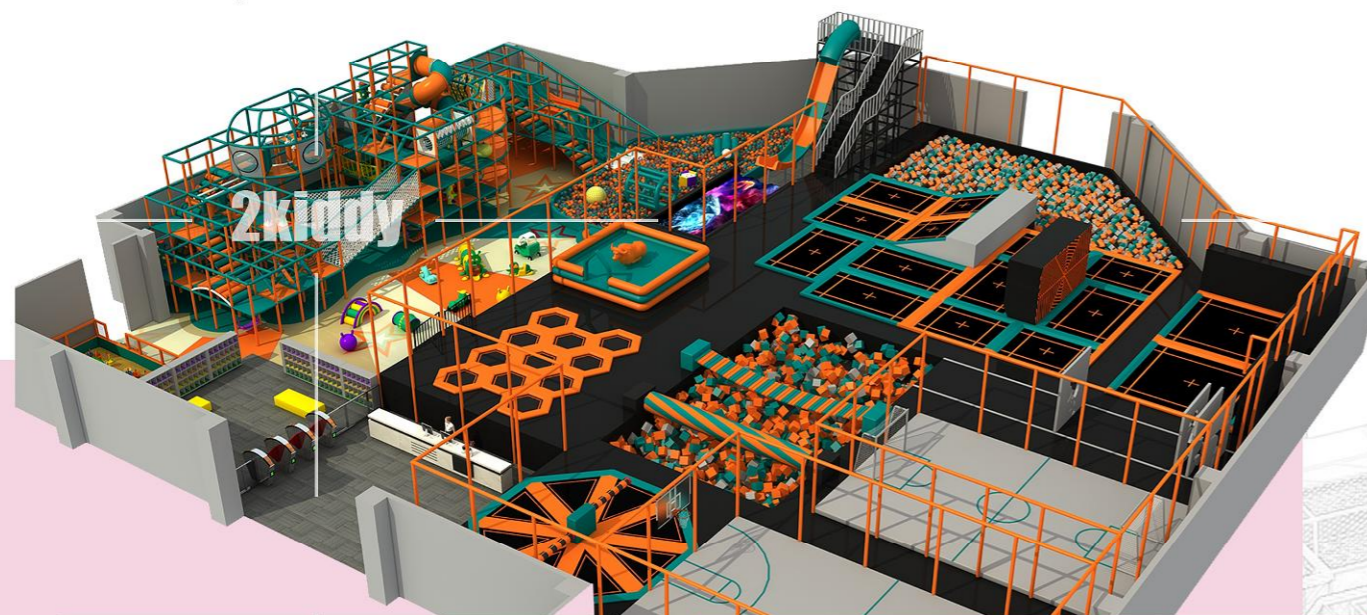
**1800 SQM 19375SQFT**

Trampoline parks are gaining popularity as families search for new and different ways to spend precious time together. This design including the most hot projects, including climbing wall, donut slide, Sky trail, basketball trampoline, ball game, etc.



# TRAMPOLINE PARK

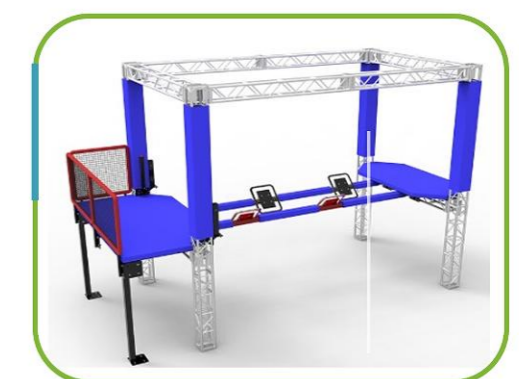
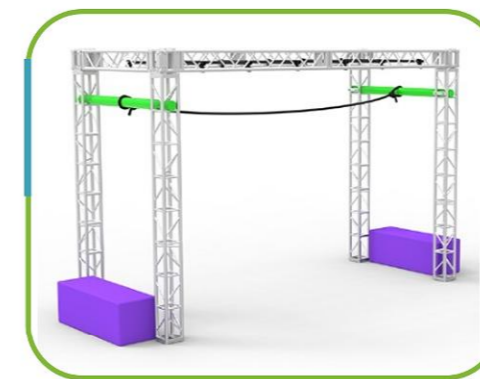
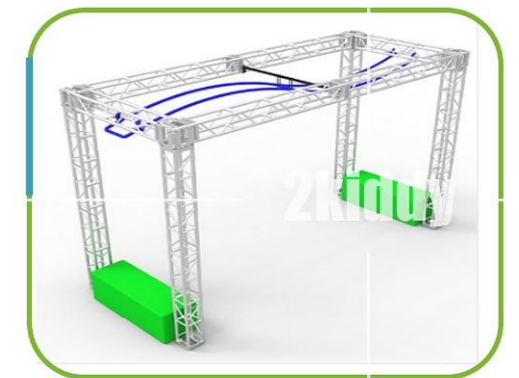
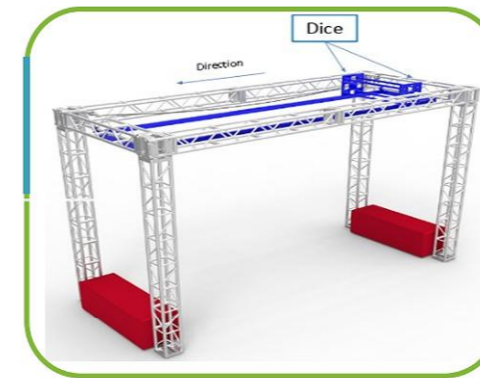
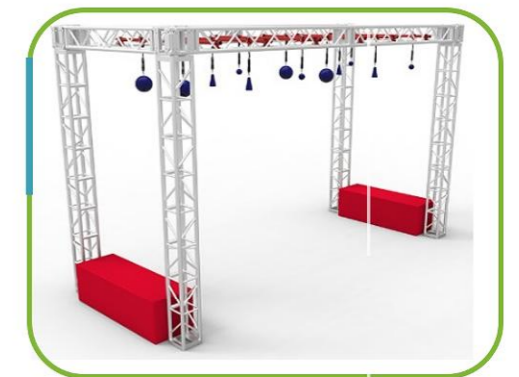
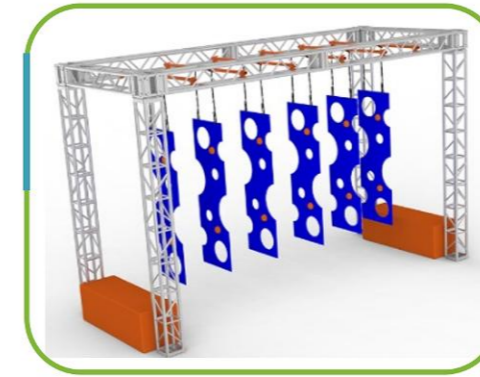
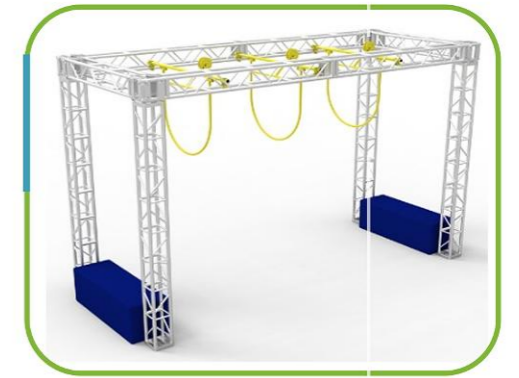
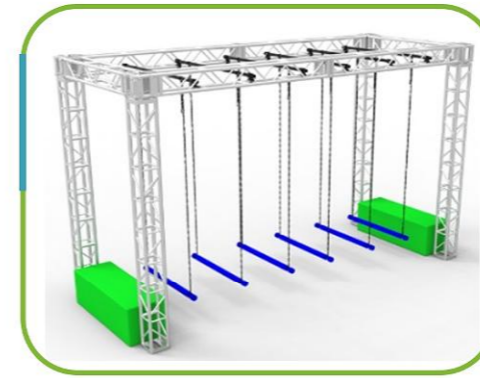
The main rooms of this design may be designed for older kids and adults, but indoor trampoline parks happily accommodate your younger players too. Some have separate supervised areas for toddlers to safely play, including pits filled with soft foam, or cordoned off areas of the main room just for them.



Big trampoline park will including indoor play zone ,foam pit with battle beam ,slant dunk, Wipe out ,football zone ,inflatable jump zone ,Olympic jump zone ,ninja course ,rope course and so on .

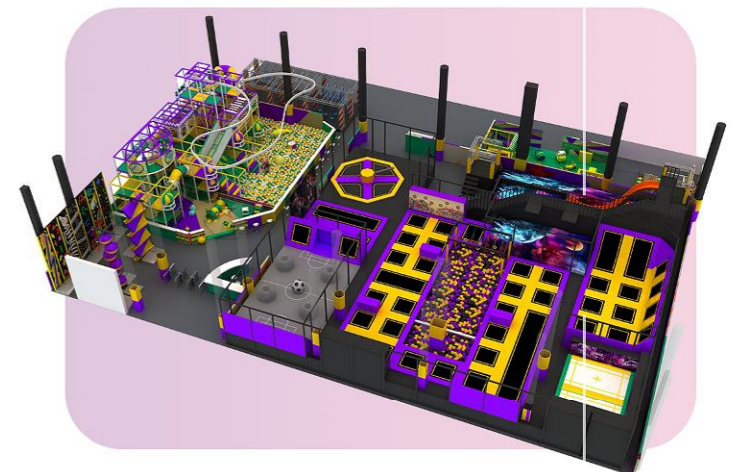
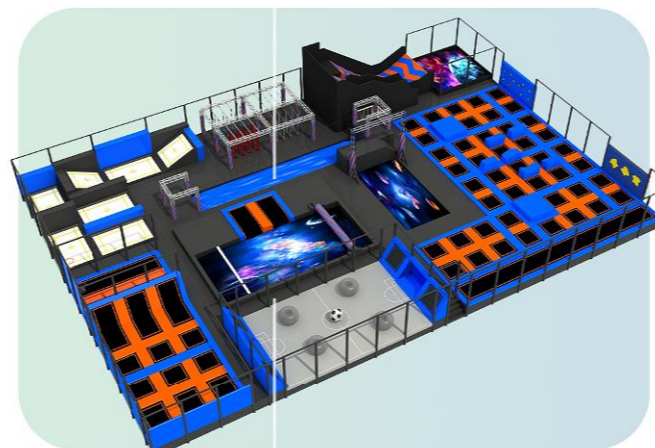
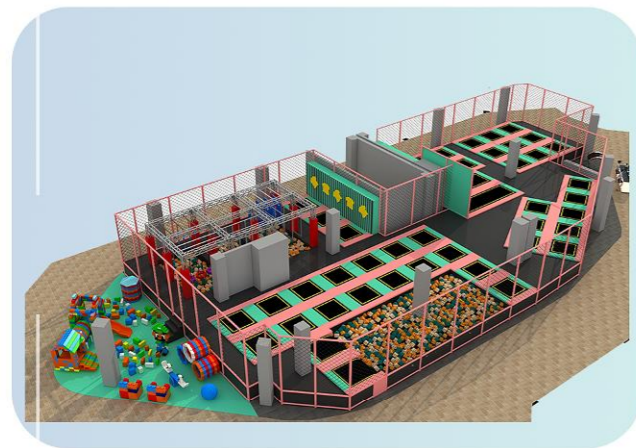
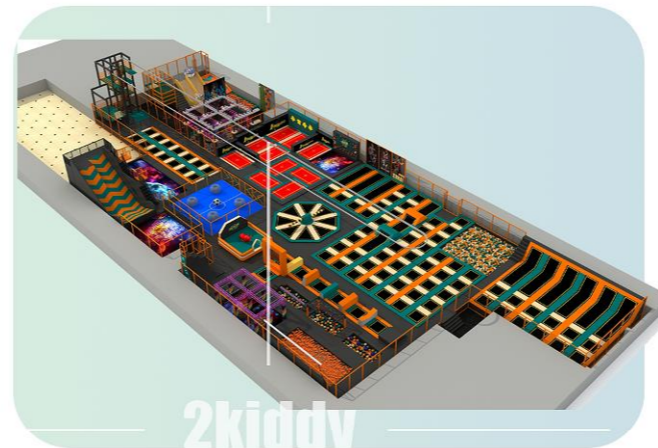
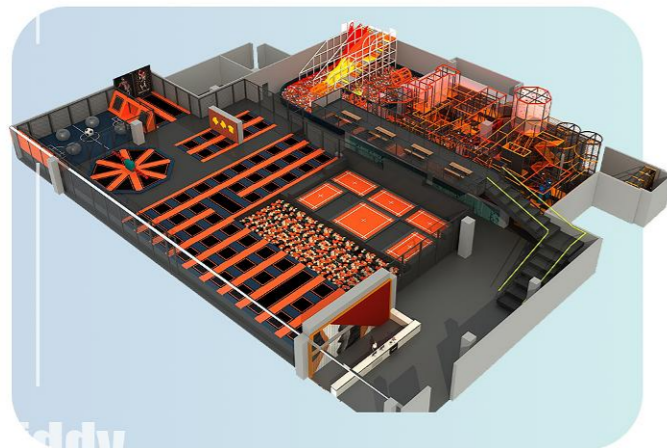
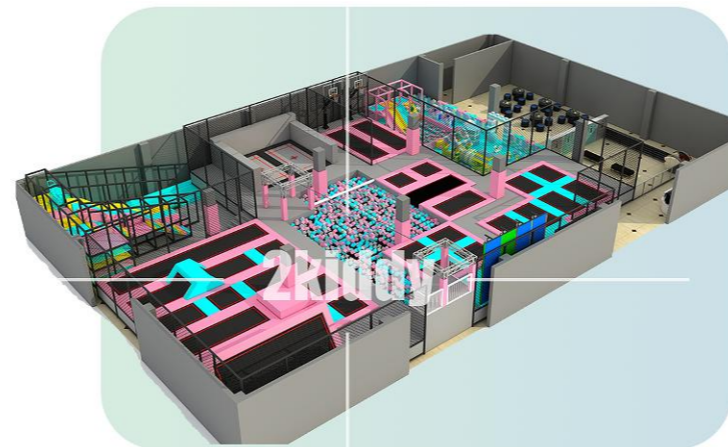
Customized design according to your location drawing is welcome ,various color mat ,multi games available for different age .

# NINJA COURSE





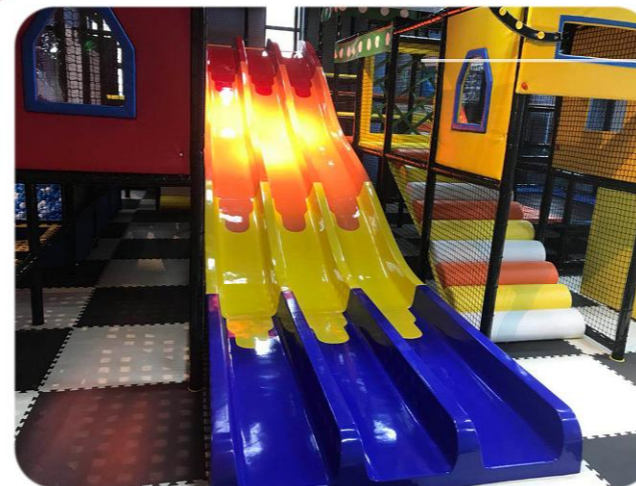
# TRAMPOLINE PARK



The background features a detailed architectural wireframe of a multi-story building, showing columns, beams, and floor slabs. The drawing is in a light grey tone. In the top-left corner, there are decorative elements: a red wavy shape with a grid of white dots, and a red and white concentric circle pattern. In the bottom-right corner, there are more decorative elements: a green and white concentric circle pattern and a teal wavy shape. The text 'REAL CASE SHOW' is centered in a bold, red, sans-serif font with a slight drop shadow.

# REAL CASE SHOW

**200SQM  
MALAYSIA**



# REAL CASE SHOW

## CUSTOMER FEEDBACK



**220SQM  
MALAYSIA**

**CUSTOMER FEEDBACK**



**706SQM**  
**SINGAPORE**  
**REAL CASE SHOW**

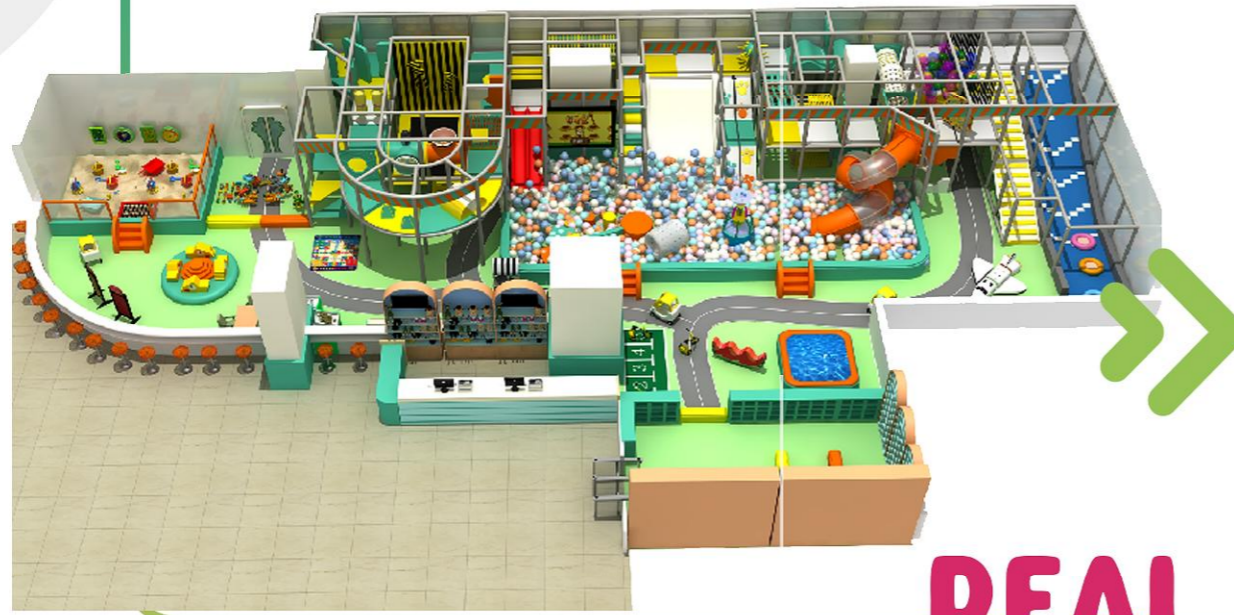
**INSTALLATION**



**PRODUCTION**



# 385SQM IN GUANGZHOU



## REAL CASE SHOW



# 350SQM IN LIQUN





**1300SQM  
PHILIPPINES**

**REAL CASE SHOW**

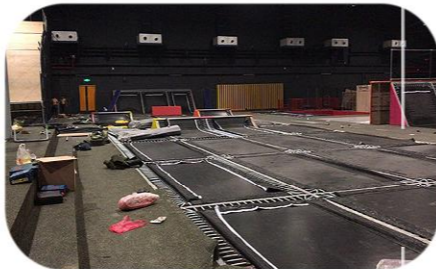
**CUSTOMER FEEDBACK**



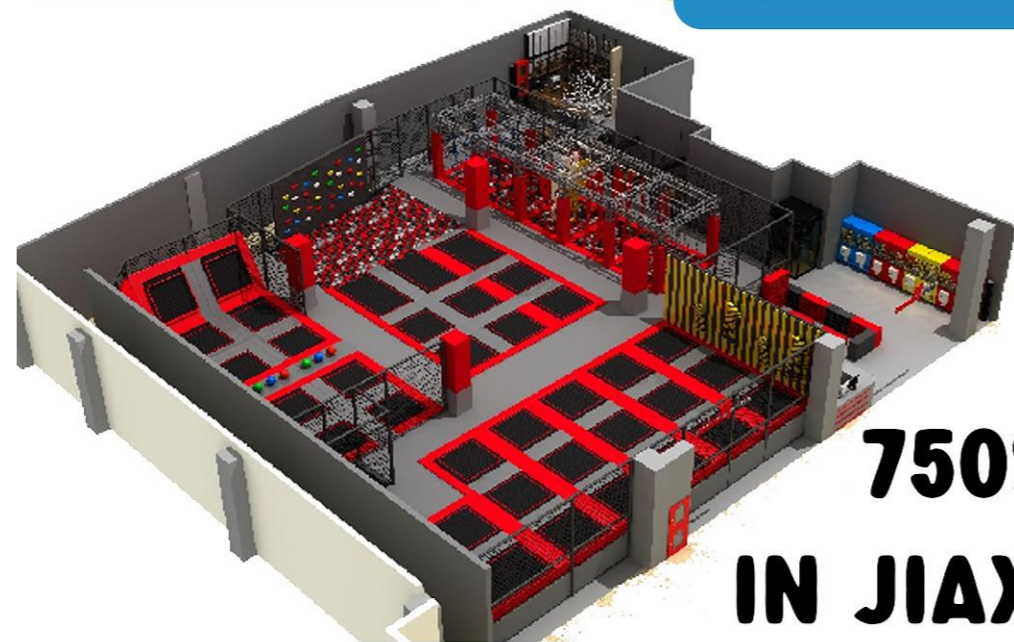
**PRODUCTION**



PRODUCTION

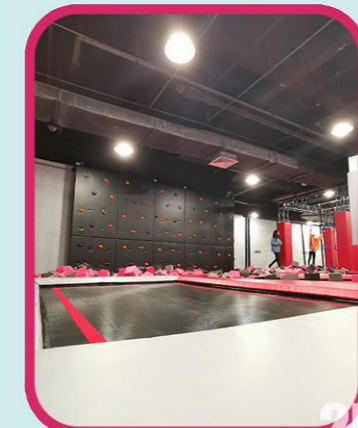


INSTALLATION



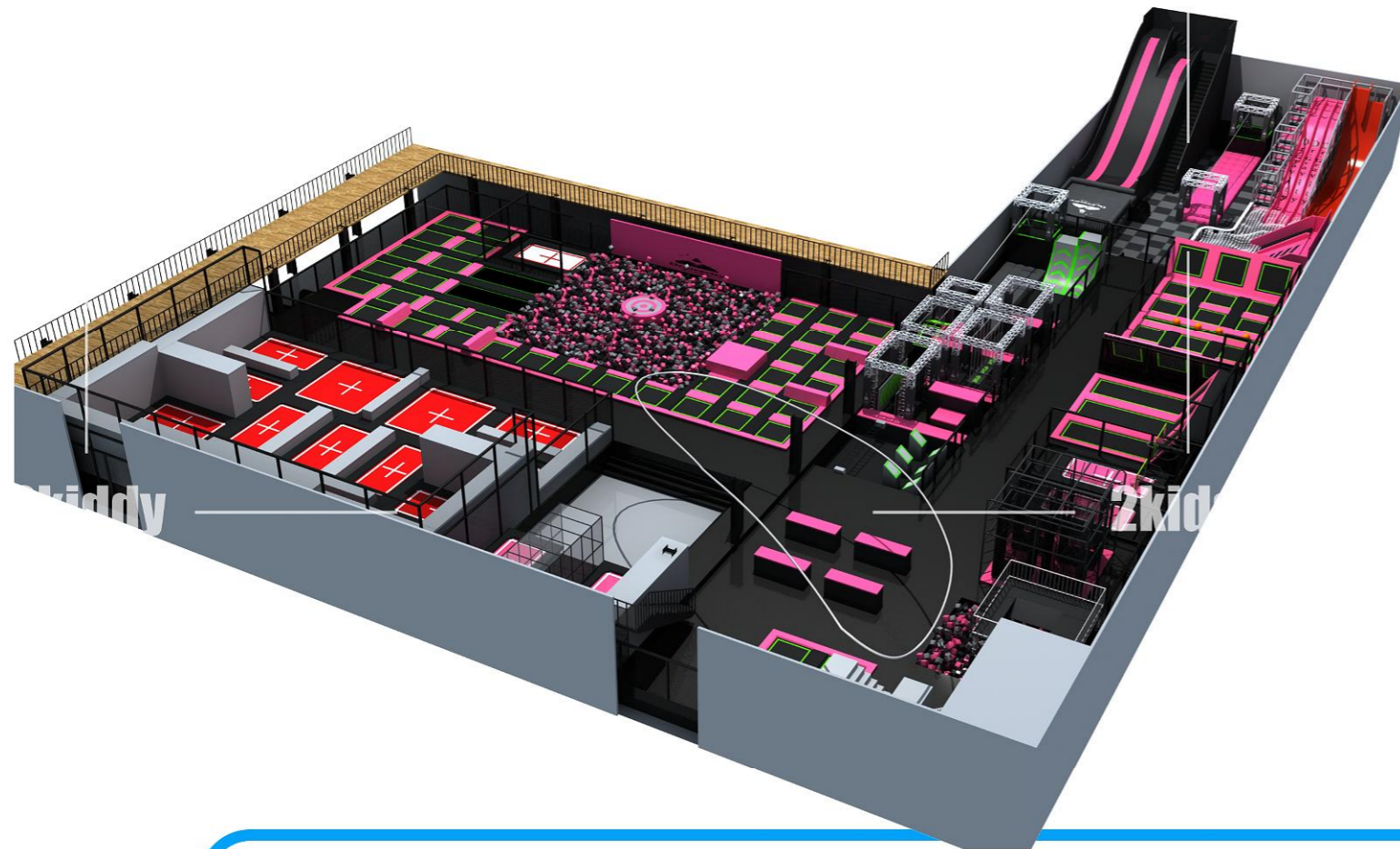
**750SQM  
IN JIAXING  
REAL CASE SHOW**

CUSTOMER FEEDBACK

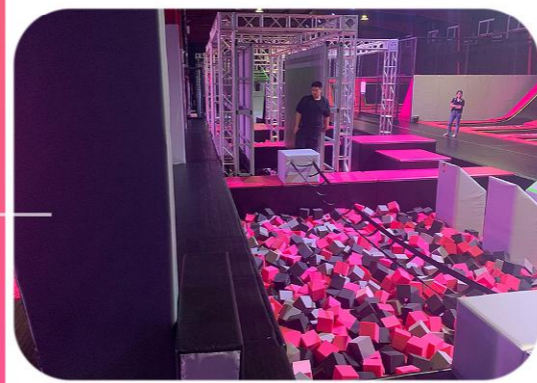
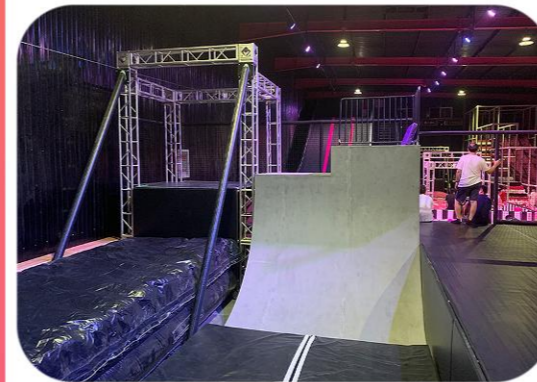


# REAL CASE SHOW

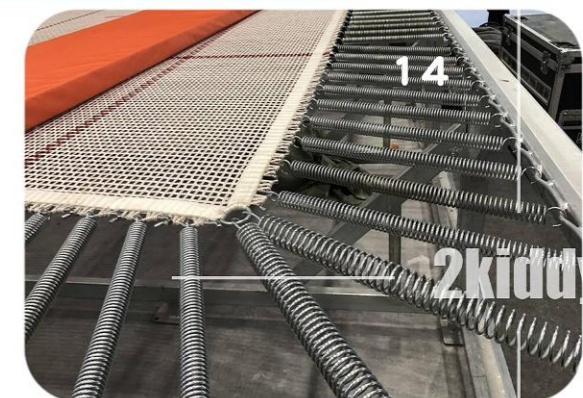
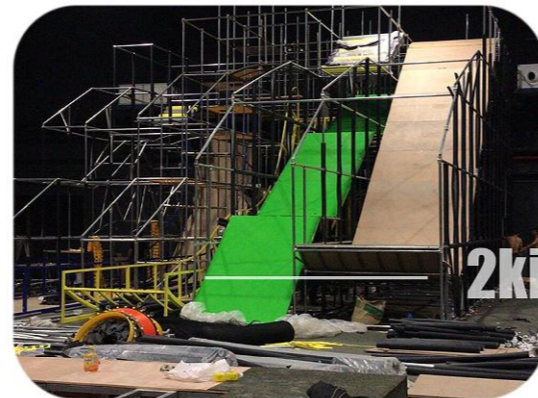
## 2540SQM IN GUANGZHOU



### CUSTOMER FEEDBACK



### PRODUCTION

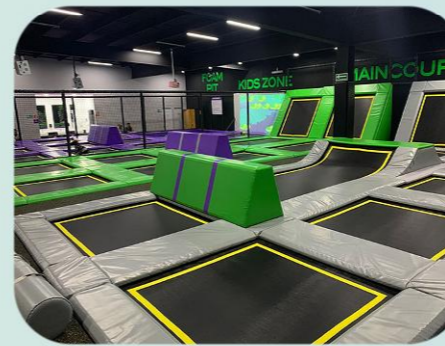
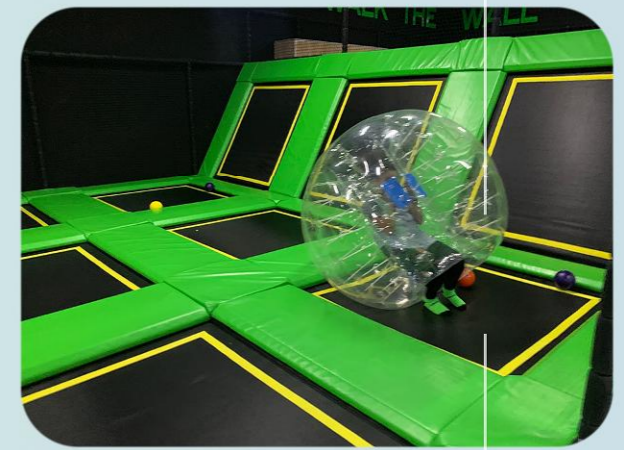
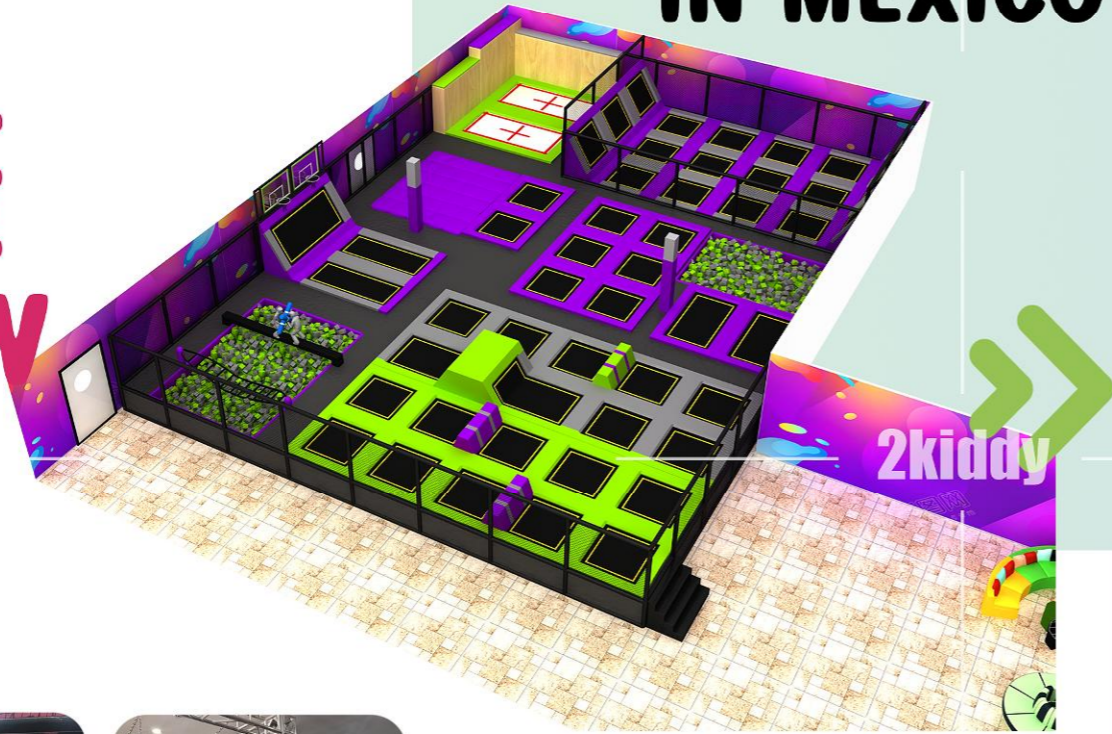




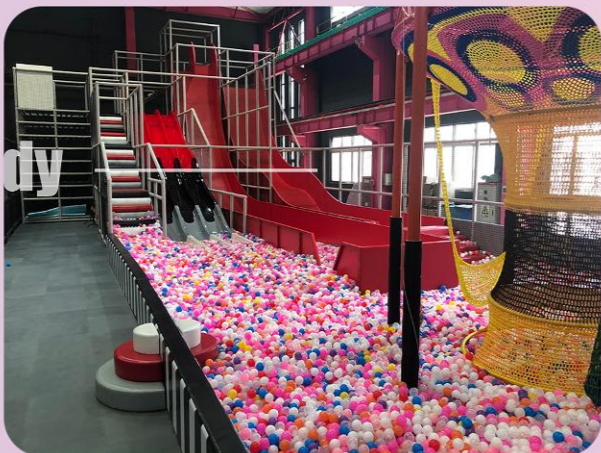
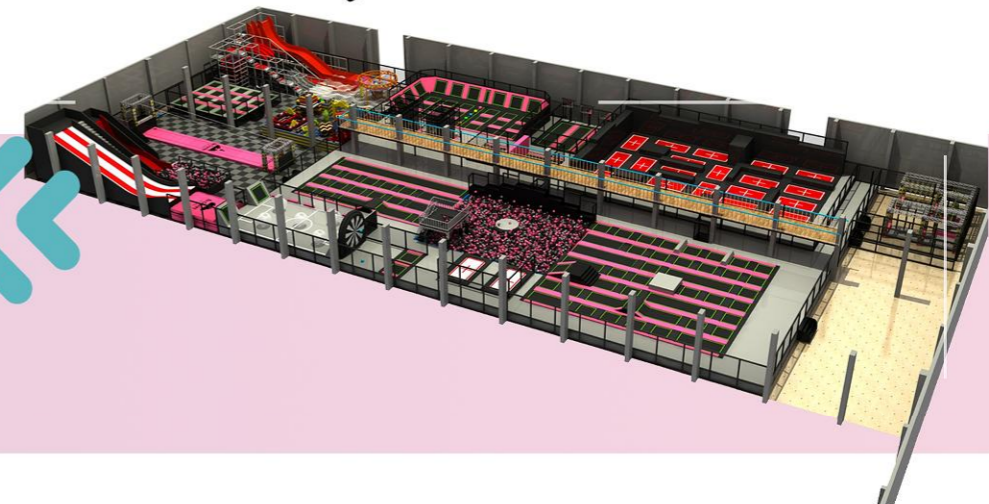
2kiddy

# REAL CASE SHOW

## 500SQM IN MEXICO



## 3500SQM IN HENAN



2kiddy

2kiddy

2kiddy

2kiddy

2kiddy

2kiddy



# PROJECT & ACCESSORY

# PROJECT FOR INDOOR PLAYGROUND

Rainbow Net



Ball Pit



Spiral Slide



Drop Slide



Spider Tower



Volcano



Gun Play Zone



Toddler Area



Palm Tree



Interactive Projection



Wall Games



Fiberglass Slide



City Town Area



Donut Slide



Role Play Area



Ball Games



# PROJECT FOR TRAMPOLINE PARK

Dodge Ball



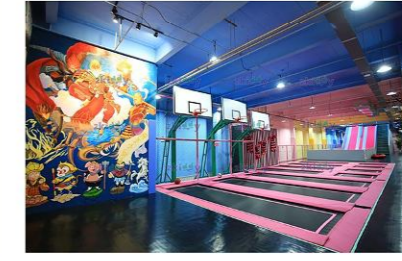
Airbags



Sky Trail



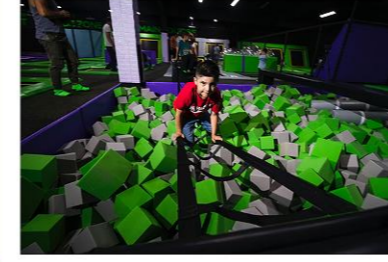
Basketball



Rope Course



Bridge



Ninja Course



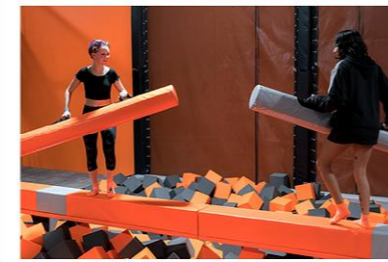
Spider Wall



Spider Tower



Fighting sticks



Climbing Ball



Wipe Out



Climbing Wall



Fighting balls



Drop Slide



Single-plank bridge



# ACCESSORIES FOR INDOOR PLAYGROUND



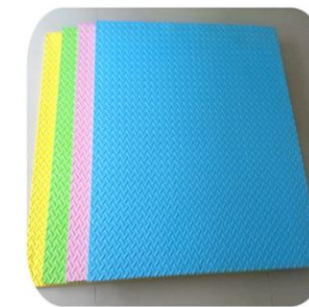
Iron frame:galvanized steel pipe, pipe. diameter 48mm, 2-3mm thickness in line with international standards GB/T244-97



Wood PARTS: malaysia import with thickness 1.5/1.8/2.0/2.5cm



Clasps:the first one is normal one;second one is anti-fire.



Mat:environmental, non-toxic and tasteless EVA foam sponge.



Plastic parts: LLDPE: The LLDPE has the advantages of high strength, good toughness, strong rigidity, heat resistance, cold resistance, etc.



Sponge is of insulation, hear insulation, sound absorption, shock absorption, flame retardant, anti-staitc. We use sponge plus pearl wool instead of whole pearl wool, because it has a good rebound resilience



Belay: nylon rope.



Screw:galvanized high strength screws.



Cover: normal PVC one and anti-fire, more durable one



Net:4\*4CM nylon rope in line with GB/T3091-2001 standard.



Base:LLDPE, used to support the steel frame.



We prepared plenty PVC and PU with different color, PU is more soft and matte, PVC is with more bright color. Wear-resistant more than 100,1000 times, flam retardant, environmental, durable, corrosion-resistant.



Fasteners: we use cast iron instead of malleable iron, more thicker, more heavier, more exquisite.



Cover side PU and PVC to choose with flat craft.



We have a wide selection of colors. the specification is φ5.5cm φ7CM φ8CM

# ACCESSORIES FOR TRAMPOLINE PARK



Main Frame:  
80\*80\*2.0mm  
40\*40\*1.5mm  
80\*50\*2.5mm



Fence around the jumping area: The fence adopts  $\Phi 48*1.5$ mm galvanized pipe. The fence is protection, installation, etc.



The flat pavement adopts double layer end face, which is made of PP material. It has strong surface rigidity, good shrinkage, excellent impact strength and scratch resistance.



The safety wheel has an automatic protection system. Automatically adjusts according to the climber's weight, formulate resistance smooth and steady descent.



Ordinary Spring : 18cm  
Professional Spring : 30cm long in four corners, 26cm long for periphery parts. All the Spring's surface is galvanized with good softness.



The pad with 0.45mm thick PVC cover to wrap 70mm thick strength pearl cotton



foot plate: 80\*50\*5mm  
Reduces damage to the ground and keeps the trampoline at a consistent level after installation.



Foam Pit Size :  
1000mm\*50mm thick  
Soft Pad under:  
7cm or 14cm thick  
EVA mats: 100\*100\*2cm  
Foam: 15\*15\*15cm  
All the foams are flame-retardant, nontoxic, tasteless non-irritating.



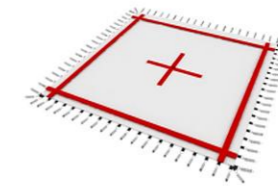
Jumping surface hook: 50\*30\*5mm, The hooks use triangular shape, which will be more secure and stronger.



Fluorescence webbing: our utilization rate of this new type of Fluorescence webbing for only 5% of lighting effects can reach 200%



Double Hole Climbing Rock: It is made of synthetic materials and has no toxic effects on the human body.



Professional trampoline mat training jumping mat: PA66 cotton ribbon. Assist users to complete various actions